



Kamalgauri Hiru Patil Shikshan Sanstha's

BALASAHEB THACKERAY LAW COLLEGE

Affiliated to University of Mumbai & Approved by BCOI



College Code: 150 / Website: <https://btlawcollege.com> / Contact: 8452082911

Add: Plot No. 73, Sector 17, Talaja Phase-2, Tal. Panvel, Dist. Raigad, Navi Mumbai-410208

CRITERION - 7

INSTITUTIONAL VALUES & BEST PRACTICES

7.1

INSTITUTIONAL VALUES AND SOCIAL RESPONSIBILITIES

Criteria 7:1:3

Describe the facilities in the institution for the management of the types of degradable and non-degradable waste.



Principal

Kamal Gauni Hiru Patil Shikshan Sanstha's
BALASAHEB THACKERAY LAW COLLEGE
Plot No. Sector - 17, Talaja, Panvel
Raigad - 410 208



Kamalgaori Hiru Patil Shikshan Sanstha's

BALASAHEB THACKERAY LAW COLLEGE

Affiliated to University of Mumbai & Approved by BCOI



College Code: 150 / Website: <https://btlawcollege.com> / Contact: 8452082911

Add: Plot No. 73, Sector 17, Talaja Phase-2, Tal. Panvel, Dist. Raigad, Navi Mumbai-410208

Criteria 7:1:3

Describe the facilities in the institution for the management of the types of degradable and non-degradable waste.

Principal

Kamal Gaori Hiru Patil Shikshan Sanstha's
BALASAHEB THACKERAY LAW COLLEGE
Plot No. Sector - 11, Talaja, Panvel
Raigad - 410 208





Kamalgauri Hiru Patil Shikshan Sanstha's

BALASAHEB THACKERAY LAW COLLEGE

Affiliated to University of Mumbai & Approved by BCOI



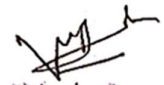
College Code: 150 / Website: <https://btlawcollege.com> / Contact: 8452082911

Add: Plot No. 73, Sector 17, Taloja Phase-2, Tal. Panvel, Dist. Raigad, Navi Mumbai-410208

Criteria 7:1:3

Management of the Degradable and Non – Degradable Waste




Principal

Kamal Gauri Hiru Patil Shikshan Sanstha's
BALASAHEB THACKERAY LAW COLLEGE
Plot No. Sector - 11, Taloja, Panvel



Kamalgauri Hiru Patil Shikshan Sanstha's

BALASAHEB THACKERAY LAW COLLEGE

Affiliated to University of Mumbai & Approved by BCOI



College Code: 150 / Website: <https://btlawcollege.com> / Contact: 8452082911

Add: Plot No. 73, Sector 17, Taloja Phase-2, Tal. Panvel, Dist. Raigad, Navi Mumbai-410208

INDEX

A. Solid Waste Management system in BTLC

B. Organic Waste Management in BTLC

C. Liquid waste Management system in BTLC

D. Biomedical Waste Management system in BTLC

E. E-Waste Management system in BTLC

F. Water Recycling system in BTLC

G. Hazardous Chemical and Radioactive Waste
Management in BTLC

H. Description in less than 500 words

Principal

Kamal Gauni Hiru Patil Shikshan Sanstha's
BALASAHEB THACKERAY LAW COLLEGE
Plot No. Sector - 17, Taloja, Panvel
Raigad - 410 208





Kamalgauri Hiru Patil Shikshan Sanstha's

BALASAHEB THACKERAY LAW COLLEGE

Affiliated to University of Mumbai & Approved by BCOI



College Code: 150 / Website: <https://btlawcollege.com> / Contact: 8452082911

Add: Plot No. 73, Sector 17, Taloja Phase-2, Tal. Panvel, Dist. Raigad, Navi Mumbai-410208

MOU with Government approved agencies



www.vindavanlandscape.com
www.vindavanlandscape@gmail.com



EDYAM-581-19-0065847

MOU For Quality Audit

MR. Deepak Mhatre **BALASAHEB THACKERAY LAW COLLEGE**
 Vindavan Landscape & Ecological Solutions & PLOT NO. 73, SECTOR 17, TALOJA PHASE-2, TAL-
PANVEL, DIST-RAIGAD, NAVI MUMBAI-410208
 20-C, Mulvanker House
 Worli Village, Mumbai -400030

MOU Date: 1st June 2023 to 31st May 2024 Period - Two Years

Both The Parties are agree for -

- MOU for Quality Audit and suggestions and fulfillment.

Terms and conditions

Duties of Vindavan landscape & ecological solutions company

- Every Month in person or online meeting onsite.
- Suggestions for sustainable environment in the campus
- Execution of suggestion / Follow-up
- Annual report Preparation

Duties of Institute

- IQAC coordinator and admin clerk will accompany with experts from company
- Hospitality of experts of company
- Computer facilities to provide to expert of company
- Discussion and action taken as per suggestions of expert of company
- Bills to release as per terms

Binding to both

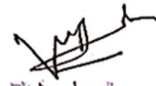
- No party can withdrawal the mou at between, other has to pay fine Rs 25,000/-
- College has to pay Rs. 50,000 for


 Vindavan Landscape & Ecological Solutions
 1st June 2023
 Principal



 BALASAHEB THACKERAY LAW COLLEGE
 PLOT NO. SECTOR - 17, TALOJA, PANVEL
 RAIGAD - 410 208




 Principal
 Kamalgauri Hiru Patil Shikshan Sanstha's
 BALASAHEB THACKERAY LAW COLLEGE
 Plot No. Sector - 17, Taloja, Panvel
 Raigad - 410 208



Kamalgauri Hiru Patil Shikshan Sanstha's

BALASAHEB THACKERAY LAW COLLEGE

Affiliated to University of Mumbai & Approved by BCOI



College Code: 150 / Website: <https://btlawcollege.com> / Contact: 8452082911

Add: Plot No. 73, Sector 17, Taloja Phase-2, Tal. Panvel, Dist. Raigad, Navi Mumbai-410208

Criteria

7:1:3 (A)

Solid Waste Management System

BTLC is located in the Navi Mumbai Municipal Council area. The Solid Waste sewage and domestic waste is managed by NMMC system which is managed well. It has Sewage Management system with proper procedure and Sewage treatment plant. It has domestic waste collection vehicles, which collects the waste from each establishment. The Solid Waste in the Institute is collected at every floor with dustbin marked for dry and wet waste collection. It is collected by NMMC for further treatment.




Principal

Kamalgauri Hiru Patil Shikshan Sanstha's
BALASAHEB THACKERAY LAW COLLEGE
Plot No. Sector - 11, Taloja, Panvel
Raigad - 410 208



Kamalgauri Hiru Patil Shikshan Sanstha's

BALASAHEB THACKERAY LAW COLLEGE

Affiliated to University of Mumbai & Approved by BCOI

College Code: 150 / Website: <https://btlawcollege.com> / Contact: 8452082911

Add: Plot No. 73, Sector 17, Talaja Phase-2, Tal. Panvel, Dist. Raigad, Navi Mumbai-410208



PHOTOGRAPH SHOWING SOLID ASTE MANAGEMENT SYSTEM OF NMMC



Principal

Kamal Gauni Hiru Patil Shikshan Sanstha's
BALASAHEB THACKERAY LAW COLLEGE
Plot No. Sector - 17, Talaja, Panvel
Raigad - 410 208



Kamalgauri Hiru Patil Shikshan Sanstha's

BALASAHEB THACKERAY LAW COLLEGE

Affiliated to University of Mumbai & Approved by BCOI



College Code: 150 / Website: <https://btlawcollege.com> / Contact: 8452082911

Add: Plot No. 73, Sector 17, Talaja Phase-2, Tal. Panvel, Dist. Raigad, Navi Mumbai-410208

Criteria 7.1.3 (B)

ORGANIC Waste Management System in the BT LAW COLLEGE

ORGANIC WASTE MANAGEMENT:

Composting and conversion are the most common ways to safely manage organic waste. Composting breaks waste down until it becomes nutrient-rich fertilizer.

Vermicomposting turns the green organic waste into dark, nutrient-rich soil, which, due to the presence of microorganisms, maintains healthy soil for growing healthy plants. Vermicomposting transforms the organic waste which is green in color, to a dark soil which enriches in nutrients.



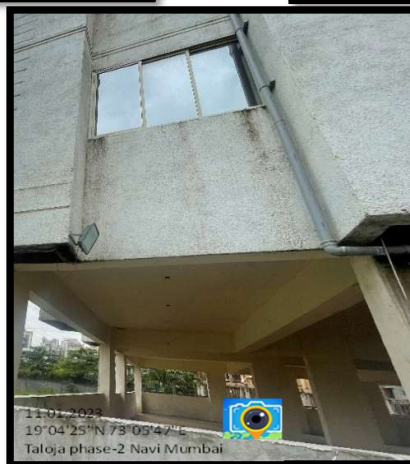

Principal

Kamal Gauri Hiru Patil Shikshan Sanstha's
BALASAHEB THACKERAY LAW COLLEGE
Plot No. Sector - 11, Talaja, Panvel
Raigad - 410 208

Criteria 7.1.3 (c)

Liquid Waste Management System in the BT LAW COLLEGE

Liquid waste mainly contains sewage/ blackwater wastage from the washroom. The sewage is collected in well-maintained drainage pipelines maintained by the Institute. Through these proper pipeline systems of chambers, it is drained in the sewage system of MC'S Liquid Waste Management System. After which the civil council looks after the liquid waste management. The MC further treats it scientifically for better management of liquid waste.



Principal

Kamal Gauni Hiru Patil Shikshan Sanstha's
BALASAHEB THACKERAY LAW COLLEGE
Plot No. Sector - 11, Talaja, Panvel
Raigad - 410 200



Kamalgauri Hiru Patil Shikshan Sanstha's

BALASAHEB THACKERAY LAW COLLEGE

Affiliated to University of Mumbai & Approved by BCOI




College Code: 150 / Website: <https://btlawcollege.com> / Contact: 8452082911

Add: Plot No. 73, Sector 17, Talaja Phase-2, Tal. Panvel, Dist. Raigad, Navi Mumbai-410208

Criteria 7.1.3 (D) Biomedical Waste Management

BTLC does not create or use any Biomedical Waste
REPORT: NIL




Principal
Kamalgauri Hiru Patil Shikshan Sanstha's
BALASAHEB THACKERAY LAW COLLEGE
Plot No. Sector - 17, Talaja, Panvel
Raigad - 410 208



Kamalgauri Hiru Patil Shikshan Sanstha's

BALASAHEB THACKERAY LAW COLLEGE

Affiliated to University of Mumbai & Approved by BCOI

College Code: 150 / Website: <https://btlawcollege.com> / Contact: 8452082911

Add: Plot No. 73, Sector 17, Talaja Phase-2, Tal. Panvel, Dist. Raigad, Navi Mumbai-410208

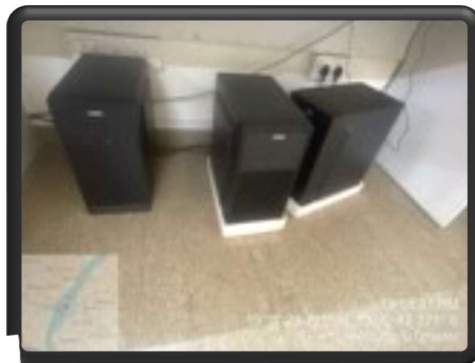


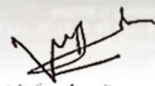
Criteria 7:1:3 (E)

E- Waste Management System In BTLC

BTLC has ICT system including electronic devices. It may be SMP's, Desktop's, Batteries, as well as electronic devices such as routers, wires, keyboards, mouse, and so on. BTLC has E- waste Collection Bin. It collects the e-waste of institute.

E- Waste collected from different department e.g. Principal room, office room and other department of BT law college building. Collected E- Waste segregated and then stored in a particular location for next process. It is observed that more E- waste Generated in IT department and Office room. E-waste store for exchange offer or dispose of too minimum price




Principal
Kamalgauri Hiru Patil Shikshan Sanstha's
BALASAHEB THACKERAY LAW COLLEGE
Plot No. Sector - 11, Talaja, Panvel
Raigad - 410 208



Kamalgauri Hiru Patil Shikshan Sanstha's

BALASAHEB THACKERAY LAW COLLEGE

Affiliated to University of Mumbai & Approved by BCOI



College Code: 150 / Website: <https://btlawcollege.com> / Contact: 8452082911

Add: Plot No. 73, Sector 17, Talaja Phase-2, Tal. Panvel, Dist. Raigad, Navi Mumbai-410208

Criteria 7:1:3 (F)

Water Recycling System in the BTLC

Water harvesting system is the one of the best methods adopted by BTLC. Waste Water is reused for plantations after process.

BTLC has a proper water harvesting system through which water is collected in water tank. The stored water is then used for the washroom and gardening purpose.




Principal

Kamal Gauri Hiru Patil Shikshan Sanstha's
BALASAHEB THACKERAY LAW COLLEGE
Plot No. Sector - 17, Talaja, Panvel
Raigad - 410 208



Kamalgauri Hiru Patil Shikshan Sanstha's

BALASAHEB THACKERAY LAW COLLEGE

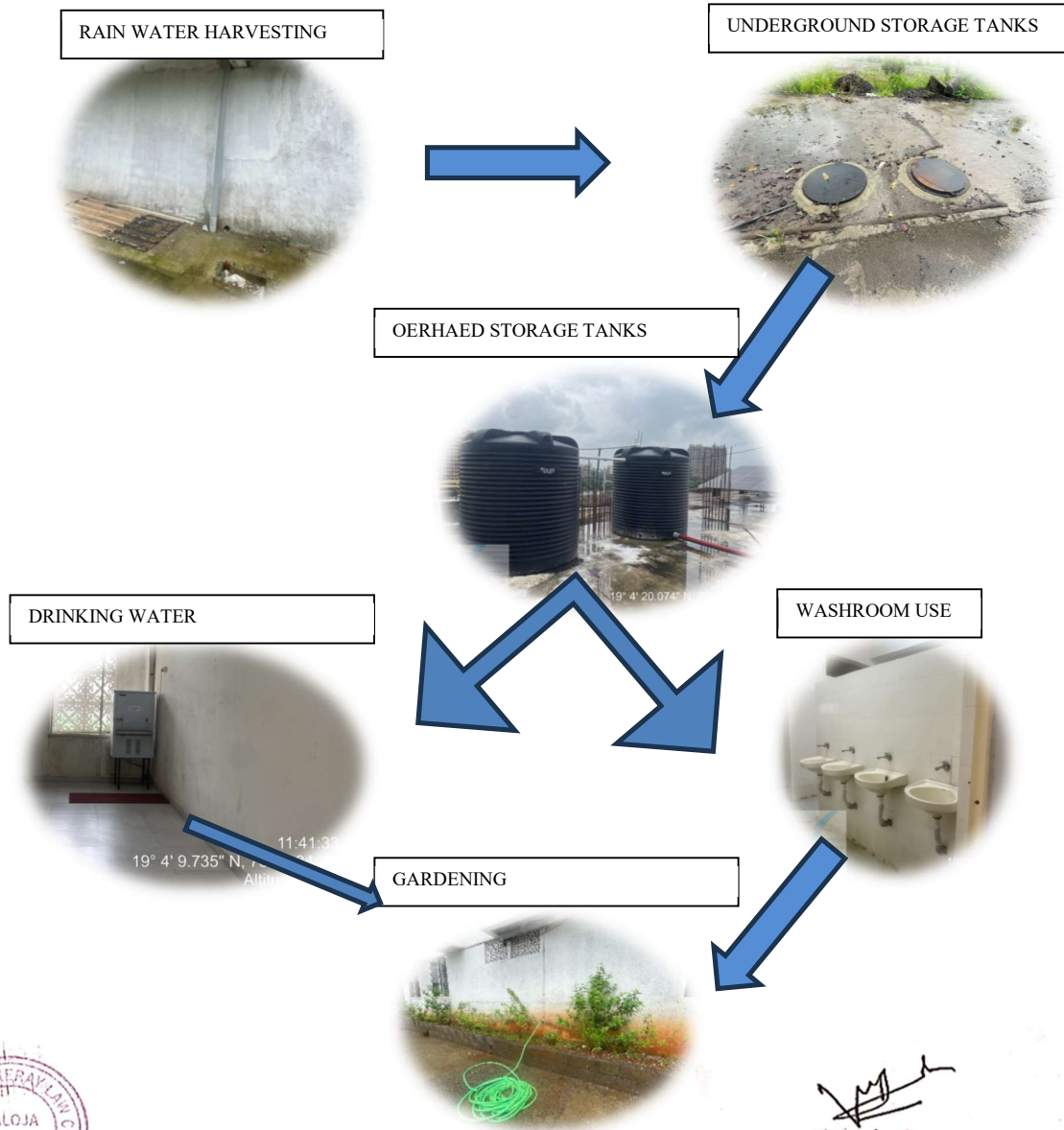
Affiliated to University of Mumbai & Approved by BCOI



College Code: 150 / Website: <https://btlawcollege.com> / Contact: 8452082911

Add: Plot No. 73, Sector 17, Taloja Phase-2, Tal. Panvel, Dist. Raigad, Navi Mumbai-410208

WATER RECYCLE SYSTEM OF BALASAHEB THACKERAY LAW COLLEGE



[Signature]
 Principal
 Kamalgauri Hiru Patil Shikshan Sanstha's
 BALASAHEB THACKERAY LAW COLLEGE
 Plot No. Sector - 11, Talaja, Panvel
 Raigad - 410 208



Kamalgauri Hiru Patil Shikshan Sanstha's

BALASAHEB THACKERAY LAW COLLEGE

Affiliated to University of Mumbai & Approved by BCOI



College Code: 150 / Website: <https://btlawcollege.com> / Contact: 8452082911

Add: Plot No. 73, Sector 17, Talaja Phase-2, Tal. Panvel, Dist. Raigad, Navi Mumbai-410208

Criteria 7:1:3 (G)

Rainwater Harvesting



Principal

Kamalgauri Hiru Patil Shikshan Sanstha's
BALASAHEB THACKERAY LAW COLLEGE
Plot No. Sector - 11, Talaja, Panvel
Raigad - 410 208



Kamalgauri Hiru Patil Shikshan Sanstha's

BALASAHEB THACKERAY LAW COLLEGE

Affiliated to University of Mumbai & Approved by BCOI

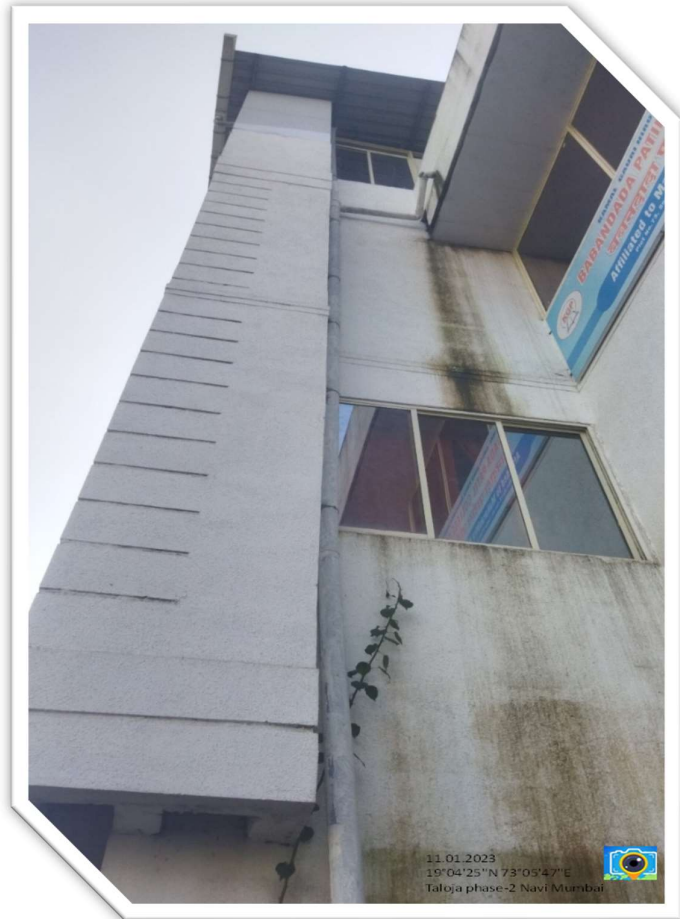


College Code: 150 / Website: <https://btlawcollege.com> / Contact: 8452082911

Add: Plot No. 73, Sector 17, Taloja Phase-2, Tal. Panvel, Dist. Raigad, Navi Mumbai-410208

Rainwater Harvesting

- The college has set-up the rain harvesting unit in different niches within the college campus. The rainwater that flows off in the college areas are collected and stored to recharge the groundwater level. Harvested rain water is filtered through several layers of mesh or strainer fixed across the inlet to the storage system and is cleaned on a regular basis. The rain water set-up units satiate the requirements of water for the entire college



Principal

Kamalgauri Hiru Patil Shikshan Sanstha's
BALASAHEB THACKERAY LAW COLLEGE
Plot No. Sector - 17, Taloja, Panvel
Raigad - 410 208



Kamalgauri Hiru Patil Shikshan Sanstha's

BALASAHEB THACKERAY LAW COLLEGE

Affiliated to University of Mumbai & Approved by BCOI



College Code: 150 / Website: <https://btlawcollege.com> / Contact: 8452082911

Add: Plot No. 73, Sector 17, Talaja Phase-2, Tal. Panvel, Dist. Raigad, Navi Mumbai-410208

7.1.3. (H)

Hazardous Chemicals and Radioactive Waste Management

BTLC does not create or use any hazardous chemical and radioactive chemicals.

REPORT: NIL



Principal

Kamalgauri Hiru Patil Shikshan Sanstha's
BALASAHEB THACKERAY LAW COLLEGE
Plot No. Sector - 17, Talaja, Panvel
Raigad - 410 208



7.1.3 (I)

Description within 500 words.

BTLC is situated in the Navi Mumbai Municipal Corporation area, which employs a comprehensive waste management system to address various types of waste. The management encompasses solid waste, liquid waste, e-waste, water recycling, and excludes the generation or use of hazardous chemicals and radioactive materials.

Solid waste management at BTLC is integrated into the NMMC system, which efficiently handles ~~waste~~ and domestic waste. The Institute employs a well-organized system, including sewage management system with proper procedures and a sewage treatment plant. Domestic waste collection vehicles pick up the waste on daily basis from the establishment.

BTLC segregates solid waste at every floor using dustbins for dry and wet waste, ensuring proper disposal. The collected waste is then handed over to MC for further treatment, contributing to a sustainable waste management process.

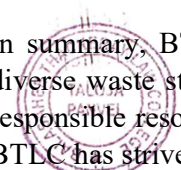
Liquid waste primarily comprises sewage/ blackwater and is managed through a well-maintained pipeline system within the BTLC building. The Navi Mumbai Municipal Corporation's Liquid Waste Management System takes charge of the liquid waste management, treating it in their dedicated plant. The efficient disposal of liquid waste underscores the commitment to environmental responsibility by BTLC.

BTLC doesn't generate biomedical waste. In addressing electronic waste (e-waste), BTLC has ~~implemented~~ a systematic approach.

Water conservation and recycling play a pivotal role in BTLC's sustainability efforts. With a water harvesting system in place, the institute efficiently collects rainwater, storing it in tanks for various purposes, notably for use in washrooms and gardening. Additionally, BTLC promotes water conservation through awareness campaigns, placing "SAVE WATER" pamphlets and flyers strategically in areas where water is utilized, such as water filter stations and washrooms.

Importantly, BTLC reports no generation or utilization of hazardous chemicals and radioactive materials. This nil report emphasizes the institute's commitment to safety and environmental consciousness.

In summary, BTLC's waste management practices showcase a holistic approach, covering diverse waste streams and demonstrating a commitment to environmental sustainability and responsible resource management. By utilizing the limited resources in a more practical way, BTLC has strived to use the resources to the maximum extent for better sustainability.



[Handwritten signature]
Kamalgauri Hiru Patil Shikshan Sanstha's
BALASAHEB THACKERAY LAW COLLEGE
Plot No. Sector - 17, Taloja, Panvel
Raigad - 410 208